

September 8, 2020

Local Advisors and Chapter Members,

Here we are with our second newsletter of the year! I've included quite a few new pieces of information for you. In addition, I've kept some items from the first newsletter in for your reference. I thought it might be helpful to have the following index so that it makes it easier to find things.

News Item	Page(s)
The Newest National Center News.....	2
Workplace Skills Assessment Program (WSAP) Major Content Changes	3-4
Student Certification Series.....	5
BPA Leads: Fall Leadership Academy	6
Virtual Fall Conferences	7
Alaska Association News.....	8
Alaska State Leadership Conference Information	8-10
Alaska BPA Trading Pin Contest	11
National Center News (was in our previous letter but included for your reference)	12
National Center Documents (was in our previous letter but included for your reference)	13
2020 WSAP Flyers (was in our previous letter but included for your reference)	14-21
2020 Events at a Glance (was in our previous letter but included for your reference)	22-27
Webinar Series Schedule (was in our previous letter but included for your reference)	28-31
Website Resource Links (was in our previous letter but included for your reference)	32-33

Our goal is to ensure that we provide you with the necessary resources and support throughout your BPA journey, which will ultimately maximize your long-term success. This is accomplished by “**Giving Purpose to Potential**” to all members, by combining your education with real-world experience and allowing you to set your sights on how to **Envision, Empower** and **Ignite** your path to success!

Should you have any questions or need help along your BPA journey, please do not hesitate to contact me. I am here to help you succeed!

Amy Riddle

Amy Riddle

Alaska Association of BPA State Advisor

amy.riddle@matsuk12.us

The Newest National Center News

Member Program Guide

The National Center has published this year's Member Program Guide. You can find it here: <https://members.bpa.org/help-center/>

BPA Member Gateway

The BPA Member Gateway is a one-stop ultimate resource for students, advisors, classroom and chapter resources. You can access the BPA Member Gateway at: members.bpa.org (login required). It is the main resource for all BPA related material, including, but not limited to:

- WSAP Download Center
- WSAP Content Preparation Resources
- WSAP Competition Presentation Template Package
- Torch Awards
- BPA Cares & Scholarship portal
- Learning Management System
 - Student Certification Series (Level One and Level Two)
 - Advisor Certification Series
 - Diversity & Inclusion Training
 - BPA Shares – Best Practice Sharing Portal
 - BPA LEADS – Leadership Course

NOTE: Membership invoices must be submitted before a student member will have access to these resources.



Workplace Skills Assessment Program (WSAP) Major Content Changes

100's - Finance

- New Contest - (170) Financial Audit (PS) - Pilot
 - Method of Assessment: Presentation based on topic
 - NOTE: Contest will operate similar to Human Resource Management
- (100) Fundamental Accounting Eligibility statement updated to read - "Limited to Secondary student members who have not completed their first-year of accounting. Contestant may not enter Fundamental Accounting and Advanced Accounting in the same year. This event may not be repeated."

200's - Business Administration (BA)

- Remove ICD-10 from the 200's; moved to the 600's - Health Administration
- Remove Medical Office Procedures from the 200's; moved to the 600's - Health Administration

300's - Management Information Systems (MIS)

- New Contest - (355) Python Programming (S | PS) - Pilot
 - Method of Assessment: Application
- Remove Visual Basic from (330) Visual Basic/C# Programming. The new contest name will be (330) C# Programming (S | PS).
- Remove "Pilot" from (350) Linux Operating System Fundamentals (S | PS) and adopt as a full event.

400's - Digital Communication Design (DCD)

- (415) Digital Publishing renamed to (415) Advanced Desktop Publishing
- (445) Broadcast News Production Team (S) will also be offered at the Post-secondary level and will be renamed (445) Broadcast News Production Team (S | PS)
- New Contest - (450) Podcast Production Team (S | PS) - Pilot
 - Method of Assessment: Technical Project / Judged Presentation

500's - Management Marketing Communications (MMC)

- (540) Ethics and Professionalism (PS) will also be offered at the Secondary level and will be renamed (540) Ethics and Professionalism (S | PS)

600's - Health Administration (HA) - Newly created for 2020-2021

- New Contest - (600) ICD-10-CM Medical Diagnostic Coding (S | PS)
 - Method of Assessment: Objective Test / Application
- New Contest - (605) Health Insurance & Medical Billing (S | PS) - Pilot
 - Method of Assessment: Application
- New Contest - (610) Health Administration Procedures (S | PS)
 - Method of Assessment: Objective Test / Application
- New Contest - (615) Health Leadership - Special Topics (S | PS) - Pilot
 - Method of Assessment: Judged Presentation based on topic
- New Contest - (620) Medical Terminology Concepts Open (S | PS) - Pilot
 - Method of Assessment: Objective test

Workplace Skills Assessment Program (WSAP) Major Content Changes (continued)

900's - Middle Level (ML)

- New Contest - (990) Human Resource Exploration (ML) - Pilot
- Remove "Pilot" from (920) Digital Citizenship (ML) and adopt as a full event.

V's - Virtual Events

- New Contest - (V10) Virtual Branding Team (ML | S | PS) - Pilot
- Remove "Pilot" from (V09) Financial Portfolio Management Team and adopt as a full event.

General WSAP Updates (applicable to multiple competitive events)

- The requirement for individual/team entry forms has been removed from all competitive events.
 - o NOTE: Release forms are still required per the individual WSAP Competitive Event guidelines.
 - o NOTE: Required information will be collected during the pre-submission process.
- All WSAP Competitive Event competencies/objectives have been reviewed and updated (refer to the individual WSAP contest pages in the September 1, 2020 WSAP Manual Release). Please pay close attention to the competency/objective changes as you prepare for your events.
- All judged event rubrics have been updated to more closely align to the new competencies/objectives. Please pay close attention to the rubric changes as you prepare for your events.
- Office 2019 will be used in the 2021-2022 membership year.
- Page 17 of the WSAP, the statement "Events that utilize images (photographs, video or audio) require a Release Form for each individual represented in the project. In addition, even if the individual is a participating student in the event." has been changed to **"Events that utilize images (photographs, video or audio) require a Release Form for each individual represented in the project. In addition, each student competing in the event must sign a Release Form as well."**

Updates to Style & Reference Manual

- Competitor(s) must use their BPA Member ID in the document header for the Report format, Works Cited and any other Style & Reference Manual formats. The "Specifications" section for each related competition additionally states that competitor(s) should use their Member ID.
- Thirteenth (13th) bullet point on page one (1), "Enumerations and bullets are formatted the same way in letters and memos. (See memo for example.)" has been updated to read **"Enumerations and bullets should be double spaced and formatted the same way in letters and memos. (See memo for example.)"**

Student Certification Series

We offer an enhanced certification series for all of our students to make sure they get the most out of their experience with Business Professionals of America! We understand participating in a CTSO like Business Professionals of America can raise questions for students: Where do you start? Who do you go to? How can you take advantage of all the opportunities available? That's why the National Officer Team put together our unique Student Certification Series to provide our student members with information and resources to become successful in BPA and Life.

SCS Level 1 - Opens September 18

The Student Certification Series Level 1 covers BPA-related topics through webinars and follow-up assignments. The objective of this program is to train you in areas of BPA such as Torch Awards, BPA Cares, member recruitment, and more. SCS Level 1 will orient student members to the ins and outs of a successful BPA journey.

SCS Level 2 - Opens September 18

The Student Member Certification Series Level 2 covers advanced BPA member topics such as time management, BPA advocacy, additional BPA leadership opportunities, and personal brand management. Additionally, all activities in the Student Member Certification Series Level 2 can also be used for Torch Points under the Leadership category. To access the Student Certification Series program, visit:

members.bpa.org/learn.



BPA LEADS: Fall Leadership Academy

BPA LEADS: Fall Leadership Academy

Registration: September 14-25, 2020

Program Runs Weekly from September 21 – November 9

BPA is proud to be partnering with the Lead4Change Student Leadership Program to provide BPA Lead's Fall Virtual Leadership Academy. The program will kick off Monday, September 21st, and run for eight weeks concluding on Monday, November 9th. This series will offer BPA student members the opportunity to lead, create, and implement team projects designed to meet a need in their school, local or global community.

During this series, students will acquire and practice essential skills that will mold them into influential leaders. Students will participate in activities that will enable them to learn to know themselves, work with a team, create a vision, and believe in their ability to reach that future vision. The Fall Leadership Academy is a free offering to BPA student members and a way to create community as we build critical leadership skills!

After completing the full Lead4Change course, participants will be able to enter their projects (via their chapter advisor) in the Lead4Change Challenge. The Challenge provides an opportunity to win up to \$10,000 for your school or community organization to continue the work you started during the Fall Leadership Academy. Students will also receive course completion certificates from BPA Leads and Lead4Change to recognize their engagement. BPA will also award a BPA Leads Digital Badge to participants who attend the course. To learn more about Lead4Change, visit: www.lead4change.org/how-to-participate.

Virtual Fall Conferences

Advisor Professional Development Conference

October 2, 2020 from 1:00-5:00 PM (ET) | October 3, 2020 from 11:00 AM-3:00 PM (ET)

National BPA recognizes that student growth and leadership development starts with their local advisor and/or other local educator influences. That is why BPA is excited to announce a brand new Advisor Professional Development Conference as part of our continued educational enrichment and year-round development offerings. Sponsored by AICPA, this conference will provide hands-on workshops, educational enrichment, networking and best practice idea exchange. The BPA Advisors Professional Development Conference will also offer advisor attendees the opportunity to earn up to 10 hours of Continuing Education Units (CEUs).

For more information and to register, visit: members.bpa.org/fallconferences

BPA Bootcamp

November 6, 2020 Morning Session: 9:00-11:00 AM (ET) | Afternoon Session (repeat of Morning Session): 12:30-2:30 PM (ET)
November 7, 2020 from 11:00 AM-2:00 PM (ET)

The BPA Platform and all of the opportunities within the BPA 365 model can be overwhelming for our student members and local chapter advisors. The BPA Bootcamp will be an engaging experience focused primarily on education opportunities, best practices for competition preparation, and member engagement in awareness of resources. National BPA will host a two-day virtual Bootcamp focused on multiple facets of BPA 365 Opportunities and best-practices for membership engagement.

For more information and to register, visit: members.bpa.org/fallconferences

Officer Leadership Summit

November 14, 2020 from 11:00 AM-2:00 PM (ET) | November 15, 2020 from 12:00-2:00 PM (ET)

In an effort to encourage year-round engagement, BPA will launch a new Officer Leadership Summit that offers state officers, local officers and Middle Level leaders the opportunity to further develop leadership skills and maximize the experience within their BPA chapter. Officers receive training and enrichment opportunities at the state and local level throughout the membership year and the Officer Leadership Summit will be an additional opportunity to create community, learn new tools, and refine their leadership skills. The experience will be available to all officers across the organization.

For more information and to register, visit: members.bpa.org/fallconferences

Alaska Association News

Alaska Association Advisor

Mrs. Amy Riddle

amy.riddle@matsuk12.us

Important Alaska Association Information

Primary Website: alaskabpa.org

Download Chapter Handbook: <https://members.bpa.org/tutorial-help-center/>

Member Registration System Portal: register.bpa.org

Advisors: Your current login credentials from [//registermychapter.com/bpamem](http://registermychapter.com/bpamem) (which is no longer active) will allow you to access the system initially.

IMPORTANT NOTE: If you serve as the local advisor for multiple membership divisions and have multiple logins (Middle Level | Secondary | Post-secondary) **you must use your login credentials associated with your Secondary Division.**

Member Gateway: members.bpa.org (login required)

Facebook: <https://www.facebook.com/BPAAlaska>

Instagram: [alaskabpa](https://www.instagram.com/alaskabpa)

Twitter: [@AlaskaBPA](https://twitter.com/AlaskaBPA)

State Officer Leadership Team (SOLT)

Our 2020-2021 State Officers are:

Andrea Trimor, Alaska BPA Post-secondary President

Engen Sundberg, Alaska BPA Post-secondary Vice President

Our State Officer Coordinator is:

Samantha Walsh

Our State Officer Leadership Team met with Mrs. Riddle, Alaska State Advisor, in April via Zoom to begin working on a plan for the 2020-2021 school year. Our next meeting will be an all-day Fall Planning Meeting on September 24. In addition, we will continue to meet on a monthly basis.

For more information on our SOLT, please visit: alaskabpa.org/our-team/

State Leadership Conference

Alaska Association: State Leadership Conference (SLC)

Alaska BPA State Leadership Conference

Friday-Saturday, February 12-13, 2021

Locations: Mat Su Borough School District (MSBSD) Office in Palmer and Mat Su Career and Technical High School in Wasilla

SLC Highlights at a Glance

Career Fair

Competitive Events

Business Meetings

Leadership Workshops

Day-of-Service Events

Miracle Minute – this activity will raise money to benefit Special Olympics Alaska

Secondary and Post-secondary Officer Elections

Networking Opportunities

Special Event on Friday – more information coming soon

Conference Registration Information

Registration will be open for one month.

Registration will be open from Wednesday, November 11, 2020 until Wednesday, December 9, 2020

Please note: members need to be registered members with the BPA National Center prior to registering them for SLC.

Registration fee for members, advisors, chaperones and guests will be \$130.

Meals are included with the registration fee.

Competitive Event Information

Members will be able to register for two events. Only one (1) event can be a judged/presentation event. Members will be allowed to take as many open (concepts) events as will fit in their schedule.

Pre-Submitted Events

Pre-Submitted Events must be submitted by Wednesday, January 20, 2021.

More information about pre-submitted events will be available when the Workplace Skills Assessment Program (WSAP) is published by the National Center.

Meals

MSBSD Nutrition Services will be providing lunch on Friday. Mat Su Career and Tech High's Culinary Arts Students will be providing dinner on Friday and breakfast, lunch and dinner on Saturday. These meals are included in the registration for SLC.

Officer Candidates

If your chapter has any members interested in running to be a member of our State Officer Leadership Team, please refer them to the link below:

alaskabpa.org/conferences/state-leadership-conference/

SLC Conference Theme and Hashtags

An announcement will be made for our conference theme in the coming months.

The hashtags we will use for our conference are:

#AlaskaBPA

#AlaskaBPASLC2021

#BPA365

SLC Housing

Chapters outside of MSBSD will be able to stay at Mat Su Career and Technical High School if they would like. There will be a charge of \$250 to cover custodial costs.

Community Member Opportunity: Volunteer at SLC

Do you know a community member who might be interested in volunteering at SLC? There are opportunities available to assist with:

- Day of Service Activities
- Checking members in for workshops or competitive events
- Logistics (checking rooms for readiness, signage, helping members with their schedules, etc.)
- Judging competitive events

Feel free to pass along this information and Mrs. Riddle's email:

amy.riddle@matsuk12.us

Calling all former BPA members

Do you have contact with any former BPA members from your chapter who might be interested in volunteering at our state leadership conference? Please send them Mrs. Riddle's email: amy.riddle@matsuk12.us

Exhibitors

Businesses and organizations are welcome to be an exhibitor at our conference. More information can be found by clicking on this link:

alaskabpa.org/conferences/state-leadership-conference/



Design Contest: NLC Trading Pin Contest

Members of your BPA chapter are invited to participate!

Design Rules

- *Must include:*
 - 2021*
 - Alaska*
 - BPA*
- *No larger than 2 inches by 2 inches*
- *Minimum resolution of 300 dpi*
- *Must be original, computer-drawn artwork*
- *Submit the design in the original JPG format with all layers*

2021 NLC Theme*



Submission Information

Email to Mrs. Amy Riddle at
amy.riddle@matsuk12.us

Submission Deadline

Monday, November 30, 2020

There will be a prize for the winner!

*The theme does not have to be included on the pin. Tying the theme into your design is recommended.

National Center News

National Virtual Events

The purpose of the National Virtual Events is to support BPA students who want to compete in a national event but have limited resources available to pay for expenses associated with attending the National Leadership Conference.

Virtual Competitions are available at the National level only and are open to all BPA student members for an additional cost. **The cost is \$10.00 for individual events and \$20.00 for team events.** There is no limit on the number of events that a student may compete in. The registration deadline **November 1, 2020.**

- Virtual Multimedia & Promotion – Individual
- Virtual Multimedia & Promotion – Team
- Software Engineering Team
- Web Application Team
- Mobile Applications
- Promotional Photography
- Virtual Cybersecurity/Digital Forensics
- Start-up Enterprise Team
- Financial Portfolio Management Team
- Virtual Branding Team

National Center Partner Programs

The following partner programs are currently only available for Secondary Division members:

Virtual Business Challenge (Sponsored by Knowledge Matters)

Test your business management and accounting skills individually or as a team in this online accounting simulation for a chance at winning the top prize of \$1,000! Winners will receive recognition at the National Honor Awards during BPA's National Leadership Conference.

Bank On It Tournament (Sponsored by Start Here, Go Places)

Think you're an accounting whiz? Prove it! Put your accounting knowledge to the test in this ultimate online accounting challenge. Attend Business Professionals of America's National Leadership Conference to challenge fellow BPA members to a game of wit, wisdom, and ambition. You will have a chance to advance to the final round of bracket play and at taking home a top prize in this epic accounting competition.

Stukent Social Media Marketing Challenge (Sponsored by Stukent)

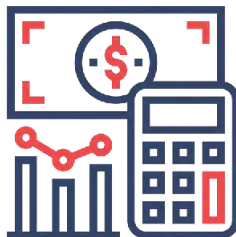
Test your social media marketing skills by managing a budget in simulated ad dollars for a fictitious global company. Challenge yourself to write targeted social media ads, perform demographic targeting, measure KPIs and create the perfect social media marketing strategy for your chance to win top honors. The top three overall participants will have the chance to be recognized at BPA's National Leadership Conference.

National Center Documents

The following National Center documents are found on the following pages for your reference throughout the year:

2020 WSAP Flyers	pages 14-21
2020 Events at a Glance.....	pages 22-27
Webinar Series Schedule	pages 28-31
Website Resource Links	pages 32-33





BUILDING YOUR FUTURE FINANCIAL CAREER

FINANCE

Finance competitions focus on demonstrating learned skills and knowledge in a wide variety of financial topics. Competitors complete hands-on calculations to predict outcomes in real-world case studies.

COMPETITIVE EVENT LISTING

- | | |
|--|--|
| (100) Fundamental Accounting (S) | (145) Banking & Finance (S PS) |
| (105) College Accounting (PS) | (150) Financial Analyst Team (S PS) * |
| (110) Advanced Accounting (S) | (155) Economic Research Individual (S) * |
| (115) Advanced College Accounting (PS) | (160) Economic Research Team (S) * |
| (125) Payroll Accounting (S) | (165) Personal Financial Management (S PS) |
| (130) College Payroll Accounting (PS) | (170) Financial Audit (PS) * – Pilot |
| (140) Federal Income Tax Accounting (PS) | (190) Financial Math & Analysis Concepts – Open (S PS) |

S – Secondary Event | PS – Post-secondary Event | * – Judged Event

CAREER PATHWAYS

Actuary
Certified Public Accountant (CPA)
Certified Financial Planner (CFP)
Financial Advisor/Planner
Insurance
Management Accountant
Personal Financial Specialist (PFS)
Risk Analyst

POTENTIAL DEGREES

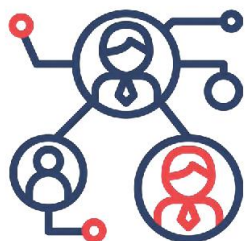
Accounting
Business Education
Business Management Economics
Finance

bpa.org



**BUSINESS
PROFESSIONALS
of AMERICA**
Giving Purpose to Potential

700 Morse Road, Suite 201, Columbus, OH 43214
Phone: 614.895.7277



BUILDING YOUR FUTURE BUSINESS CAREER



BUSINESS ADMINISTRATION

Business Administration competitions focus on planning, organizing, directing and evaluating business functions essential to efficient and productive business operations. Career opportunities are available in every sector of the economy and require specific skills in organization, time management, customer service and communication.

COMPETITIVE EVENT LISTING

- | | |
|---|---|
| (200) Fundamental Word Processing (S PS) | (235) Advanced Spreadsheet Applications (S PS) |
| (205) Intermediate Word Processing (S PS) | (240) Database Applications (S PS) |
| (210) Advanced Word Processing (S PS) | (245) Legal Office Procedures (S PS) |
| (215) Integrated Office Applications (S PS) | (255) Administrative Support Team (S PS) |
| (220) Basic Office Systems & Procedures (S PS) | (260) Administrative Support Research Project (S) * |
| (225) Advanced Office Systems & Procedures (S PS) | (265) Business Law & Ethics (S PS) |
| (230) Fundamental Spreadsheet Applications (S PS) | (290) Administrative Support Concepts – Open (S PS) |

S – Secondary Event | PS – Post-secondary Event | * – Judged Event

BPA ALIGNED CERTIFICATIONS

- (210) Advanced Word Processing (S | PS) - MOS Word 2016
- (215) Integrated Office Applications (S | PS) - MOS PowerPoint 2016
- (235) Advanced Spreadsheet Applications (S | PS) - MOS Excel 2016
- (240) Database Applications (S | PS) - MOS Access 2016

CAREER PATHWAYS

Administrative Assistant
Administrative Service
Business Consultant
Business Office Manager
Data Entry Manager
Legal Office Assistant
Medical Office Assistant

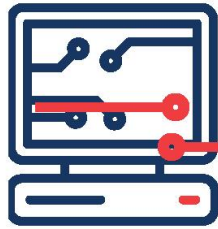
POTENTIAL DEGREES

Business Education
Business Management
Entrepreneurship

bpa.org



700 Morse Road, Suite 201, Columbus, OH 43214
Phone: 614.895.7277



BUILDING YOUR FUTURE TECHNOLOGY CAREER

MANAGEMENT INFORMATION SYSTEMS

Management Information Systems competitions focus on entry level, technical and professional careers related to the design, development, support and management of hardware, software, multimedia, communication and systems integration services.

COMPETITIVE EVENT LISTING

- | | |
|---|---|
| (300) Computer Network Technology (S PS) | (335) C++ Programming (S PS) |
| (305) PC Servicing & Troubleshooting (S PS) | (340) Java Programming (S PS) |
| (310) Server Administration Using Microsoft® (S PS) | (345) SQL Database Fundamentals (S PS) |
| (315) Network Administration Using Cisco® (S PS) | (350) Linux Operating System Fundamentals (S PS) |
| (320) Computer Security (S PS) | (355) Python Programming (S PS)– Pilot |
| (325) Network Design Team (S PS) * | (390) Computer Programming Concepts – Open (S PS) |
| (330) C# Programming (S PS) | (391) Information Technology Concepts – Open (S PS) |

S – Secondary Event | PS – Post-secondary Event | * – Judged Event

BPA ALIGNED CERTIFICATIONS

- (300) Computer Network Technology (S | PS) – MTA Networking Fundamentals
(305) PC Servicing & Troubleshooting (S | PS) – MTA Windows OS Fundamentals
(310) Server Administration Using Microsoft® (S | PS) - MTA Networking Fundamentals
(320) Computer Security (S | PS) - MTA Security Fundamentals
(330) C# Programming (S | PS) - MTA Software Development Fundamentals C#/VB

CAREER PATHWAYS

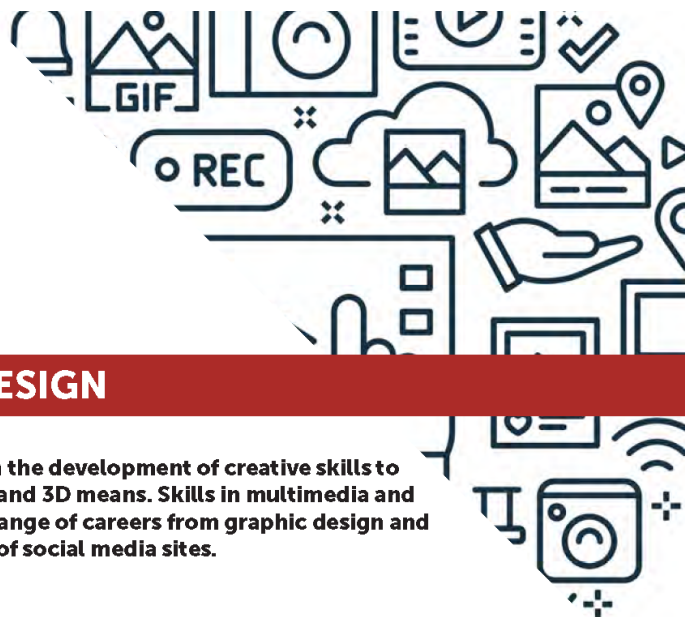
Computer Engineer
Computer Technician
Cybersecurity
Network Engineer
Programmer / Software Developer

POTENTIAL DEGREES

Computer Engineering	Computer Science
Computer Networking	Cybersecurity
Computer Programming	Entrepreneurship



BUILDING YOUR FUTURE MEDIA CAREER



DIGITAL COMMUNICATIONS & DESIGN

Digital Communications & Design competitions focus on the development of creative skills to share a message, feeling or emotion through digital, 2D and 3D means. Skills in multimedia and technical design are developed and can be applied to a range of careers from graphic design and interior design to digital communication and managing of social media sites.

COMPETITIVE EVENT LISTING

- | | |
|---|---|
| (400) Fundamental Desktop Publishing (S PS) | (430) Video Production Team (S PS) * |
| (405) Fundamentals of Web Design (S PS) | (435) Website Design Team (S PS) * |
| (410) Graphic Design Promotion (S PS) * | (440) Computer Animation Team (S) * |
| (415) Advanced Desktop Publishing (S PS) * | (445) Broadcast News Team (S PS) * |
| (420) Digital Media Production (S PS) * | (450) Podcasting Team (S PS) *- Pilot |
| (425) Computer Modeling (S) * | (490) Digital Communication & Design Concepts – Open (S PS) |

S – Secondary Event | PS – Post-secondary Event | * – Judged Event

BPA ALIGNED CERTIFICATIONS

(405) Fundamentals of Web Design (S | PS) - MTA Introduction to Programming Using HTML and CSS

CAREER PATHWAYS

Animator
Audio-Video Designer
Film and Video Editor
Graphic Designer
Illustrator
Multimedia Artist

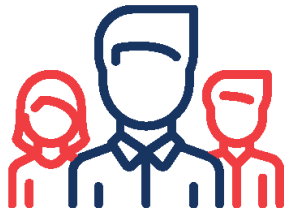
POTENTIAL DEGREES

Audio Production
AV Communication
Broadcast Journalism
Communications
Digital Media
Graphic Design

bpa.org



700 Morse Road, Suite 201, Columbus, OH 43214
Phone: 614.895.7277



BUILDING YOUR FUTURE MARKETING CAREER



MANAGEMENT MARKETING & COMMUNICATIONS

Management, Marketing & Communications competitions focus on planning, managing and performing marketing activities to reach organizational objectives. Many competitions focus on perfecting speaking and presentation skills using several different platforms.

COMPETITIVE EVENT LISTING

- | | |
|---|--|
| (500) Global Marketing Team (S) * | (550) Parliamentary Procedure Team (S) * |
| (505) Entrepreneurship (S PS) * | (555) Presentation Management Individual (S PS) * |
| (510) Small Business Management Team (S PS) * | (560) Presentation Management Team (S PS) * |
| (515) Interview Skills (S PS) * | (590) Business Meeting Management Concepts – Open (S PS) |
| (520) Advanced Interview Skills (S PS) * | (591) Management, Marketing and Human Resources Concepts – Open (S PS) |
| (525) Extemporaneous Speech (S) * | (592) Parliamentary Procedure Concepts – Open (S PS) |
| (530) Contemporary Issues (PS) * | (593) Project Management Concepts – Open (PS) |
| (535) Human Resource Management (S PS) * | (594) Digital Marketing Concepts – Open (S PS) |
| (540) Ethics & Professionalism (S PS) * | |
| (545) Prepared Speech (S PS) * | |

S – Secondary Event | PS – Post-secondary Event | * – Judged Event

CAREER PATHWAYS

Account Executive
Business Manager
Entrepreneur
Human Resources Manager
Public Relations Manager
Sales Manager

POTENTIAL DEGREES

Business Administration
Business Education
Business Management
Communications
Entrepreneurship
Marketing





STARTING YOUR JOURNEY TO CAREER AWARENESS



MIDDLE LEVEL

Middle Level competitions focus on all WSAP assessment areas: Finance, Business Administration, Management Information Systems, Digital Communication and Design and Management, Marketing, Communications. All Middle Level competitions focus on the demonstration of future career skills.

COMPETITIVE EVENT LISTING

(900) Financial Literacy (ML)
(915) Administrative Support Team (ML)
(920) Digital Citizenship (ML)
(925) Keyboarding Production (ML)
(930) Spreadsheet Applications (ML)
(940) Digital Game Design Team (ML) *
(945) Graphic Design Promotion (ML) *
(950) Introduction To Video Production (ML) *
(955) Website Design Team (ML) *

(970) Entrepreneurship Exploration (ML) *
(975) Extemporaneous Speech (ML) *
(980) Prepared Speech (ML) *
(985) Presentation Management Team (ML) *
(990) Human Resource Exploration (ML) *- Pilot
(995) Business Communication Skills Concepts – Open (ML)
(996) Business Fundamentals Concepts – Open (ML)
(997) Business Math Concepts – Open (ML)
(998) Computer Literacy Concepts – Open (ML)

ML - Middle Level Event | * – Judged Event

**BECOME FUTURE READY
ENHANCE LEADERSHIP ABILITY
EXPLORE CAREER PATHWAYS
LEARN PROFESSIONAL SKILLS**

PREPARE FOR CAREERS IN:

Business
Communications
Digital Design
Finance
Marketing
Technology

bpa.org



700 Morse Road, Suite 201, Columbus, OH 43214
Phone: 614.895.7277



VIRTUAL COMPETITIONS FOR ALL MEMBERS



VIRTUAL COMPETITIONS

Virtual Competitions are direct to National Events that take place through virtual project submissions and presentations to industry professionals. The Top 10 in each Virtual Event is invited to attend the National Leadership Conference and compete in the National Showcase to determine the Best in Show!

COMPETITIVE EVENT LISTING

- (V01) Virtual Multimedia & Promotion Individual (ML | S | PS) *
- (V02) Virtual Multimedia & Promotion Team (ML | S | PS) *
- (V03) Software Engineering Team (ML | S | PS) *
- (V04) Web Application Team (ML | S | PS) *
- (V05) Mobile Applications (ML | S | PS) *
- (V06) Promotional Photography (ML | S | PS) *
- (V07) Cybersecurity/Digital Forensics (ML | S | PS) *
- (V08) Start-up Enterprise Team (ML | S | PS) *
- (V09) Financial Portfolio Management Team (ML | S | PS) *
- (V10) Virtual Branding Team (ML | S | PS) *– Pilot

ML - Middle Level Event | S – Secondary Event | PS – Post-secondary Event | * – Judged Event


CAREER PATHWAYS

Business Manager
Cybersecurity
Digital Media / Marketing
Entrepreneurship
Photographer
Software Engineer
Stock Broker / Financial Planner
Web Application Developer

POTENTIAL DEGREES


Business Administration
Business Management
Computer Science
Digital Media Arts
Entrepreneurship
Finance
Marketing

MIDDLE LEVEL EVENTS-AT-A-GLANCE


 BUSINESS PROFESSIONALS of AMERICA <small>Giving Purpose to Potential</small>	Minutes for orientation, prep, set-up, warm-up	Minutes for wrap-up	Minutes for testing and/or presentation	Minutes for Judges Questions	May event be repeated?	Are production standards used?	May reference materials be used?	Computer and printer provided by BPA?	Color Printing Allowed?	Judges utilized*	Number of state entries eligible for national competition
Virtual											
(V01) Virtual Multimedia and Promotion Individual (ML S PS)	3		10	5	Y	Y	N	N	Y	Y	U
(V02) Virtual Multimedia and Promotion Team (ML S PS)	3		10	5	Y	Y	N	N	Y	Y	U
(V03) Software Engineering Team (ML S PS)	3		10	5	Y	Y	N	N	Y	Y	U
(V04) Web Application Team (ML S PS)	3		10	5	Y	Y	N	N	Y	Y	U
(V05) Mobile Applications (ML S PS)	3		10	5	Y	Y	N	N	Y	Y	U
(V06) Promotional Photography (ML S PS)	3		7	5	Y	Y	N	N	Y	Y	U
(V07) Cybersecurity/Digital Forensics (ML S PS)	3		10	5	Y	Y	N	N	Y	Y	U
(V08) Start-up Enterprise Team (ML S PS)	3		10	5	Y	Y	N	N	Y	Y	U
(V09) Financial Portfolio Investment Team (ML S PS)	3		10	5	Y	Y	N	N	Y	Y	U
(V10) Virtual Branding Team (ML S PS) - Pilot											
Finance											
(900) Financial Literacy (ML)			60		Y	N	Y				5
Business Administration											
(915) Administrative Support Team (ML)	15	15	60		Y	Y	Y	Y	N		2
(920) Digital Citizenship (ML)			60		Y	N	Y	Y**			5
(925) Keyboarding Production (ML)	15	15	60		Y	Y	Y	Y	N		5
(930) Spreadsheet Applications (ML)	15	15	60		Y	N	Y	Y	N		5
Management Information Systems											
(940) Digital Game Design Team (ML)	3		10	5	Y	N	N	N	Y	Y	2
Digital Communication & Design											
(945) Graphic Design Promotion (ML)			5	5	Y	N	N	N	Y	2	3
(950) Introduction to Video Production Team (ML)	3		5	5	Y	N	Y	N	Y	2	2
(955) Website Design Team (ML)	3		5	5	Y	N	Y	N	Y	2	2

- Y = Yes
- N = No
- U = Unlimited

* Rating sheets are provided in the *Guidelines*.
 ** At the national level, states may vary.

	Minutes for orientation, prep, set-up, warm-up	Minutes for wrap-up	Minutes for testing and/or presentation	Minutes for Judges Questions	May event be repeated?	Are production standards used?	May reference materials be used?	Computer and printer provided by BPA?	Color Printing Allowed?	Judges utilized*	Number of state entries eligible for national competition
	Management, Marketing and Communication										
(970) Entrepreneurship Exploration (ML)	3		10	5	Y	N	N	N	Y	2	3
(975) Extemporaneous Speech (ML)	10		2-4		Y	N	N	N	N	2	3
(980) Prepared Speech (ML)	3		3-5		Y	N	Y	N	N	2	3
(985) Presentation Management Team (ML)	3		5-7	5	Y	N	N	N	Y	2	2
(990) Human Resource Exploration (ML)-Pilot	3		10		Y	Y	N	N	Y	2	3
Open Events											
(995) Business Communication Skills Concepts – Open (ML)			60		Y	N	N	Y**			U
(996) Business Fundamentals Concepts – Open (ML)			60		Y	N	N	Y**			U
(997) Business Math Concepts – Open (ML)			60		Y	N	N	Y**			U
(998) Computer Literacy Concepts – Open (ML)			60		Y	N	N	Y**			U

SECONDARY | POST-SECONDARY EVENTS-AT-A-GLANCE

 BUSINESS PROFESSIONALS of AMERICA Giving Purpose to Potential EVENTS-AT-A-GLANCE	Maximum minutes for orientation, prep and warm-up	Maximum minutes for wrap-up	Actual minutes of testing and/or presentation	Judges Questions (Min.)	May event be repeated?	Are production standards used?	May reference materials be used? (See WSAP for details)	Computer and printer provided by BPA?	Color printing allowed?	Bring own computer?	Judges utilized*	Number of state entries eligible for national competition	Level for this event	Associate Division Event	Additional Certification Component	Release Forms Required?
Virtual																
(V01) Virtual Multimedia and Promotion Individual (ML S PS)	3		10	5	Y	Y	N	N	Y	Y	Y	U	S, PS	Y		Y
(V02) Virtual Multimedia and Promotion Team (ML S PS)	3		10	5	Y	Y	N	N	Y	Y	Y	U	S, PS	Y		Y
(V03) Software Engineering Team (ML S PS)	3		10	5	Y	Y	N	N	Y	Y	Y	U	S, PS	Y		Y
(V04) Web Application Team (ML S PS)	3		10	5	Y	Y	N	N	Y	Y	Y	U	S, PS	Y		Y
(V05) Mobile Applications (ML S PS)	3		10	5	Y	Y	N	N	Y	Y	Y	U	S, PS	Y		Y
(V06) Promotional Photography (ML S PS)	3		7	5	Y	Y	N	N	Y	Y	Y	U	S, PS	Y		Y
(V07) Cybersecurity/Digital Forensics (ML S PS)	3		10	5	Y	Y	N	N	Y	Y	Y	U	S, PS	Y		N
(V08) Start-up Enterprise Team (ML S PS)	3		10	5	Y	Y	N	N	Y	Y	Y	U	S, PS	Y		N
(V09) Financial Portfolio Management Team (ML S PS)	3		10	5	Y	Y	N	N	Y	Y	Y	U	S, PS	Y		N
(V10) Virtual Branding Team (ML S PS)-Pilot	3		10	5	Y	Y	N	N	Y	Y	Y	U	S, PS	Y		Y
Finance																
(I00) Fundamental Accounting (S)	10	10	90		N	N	Y	N				5	S	Y		N
(I05) College Accounting (PS)	10	10	90		N	N	Y	N				5	PS			N
(I10) Advanced Accounting (S)	10	10	90		Y	N	Y	N				5	S			N
(I15) Advanced College Accounting (PS)	10	10	90		Y	N	Y	N				5	PS			N
(I25) Payroll Accounting (S)	10	10	60		Y	N	Y	N				5	S			N
(I30) College Payroll Accounting (PS)	10	10	60		Y	N	Y	N				5	PS			N
(I35) Managerial Accounting (PS)	10	10	90		Y	N	Y	N				5	PS			N
(I40) Federal Income Tax Accounting (PS)	10	10	90		Y	N	Y	N				5	PS			N
(I45) Banking & Finance (S PS)	10	10	60		Y	N	Y	N				5	S, PS			N
(I50) Financial Analyst Team (S PS)	8		30/10	10	Y	N	Y	N	Y	Y	2	2	S, PS			N
(I55) Economic Research Individual (S)	3		7	5	Y	N	N	N			2	3	S			N
(I60) Economic Research Team (S)	3		7	5	Y	N	N	N			2	2	S			N
(I65) Personal Financial Management (S PS)			60		Y	N	Y	N				5	S, PS			N
(I70) Financial Audit (PS)-Pilot	20		3-5	3	Y	N	Y	N			2	3	PS			N
(I90) Financial Math & Analysis Concepts - Open Event (S PS)			60		Y	N	N	N				U	S, PS	Y		N

*Rating sheets are provided in the guidelines.


Y = Yes

N = No

S = Secondary

PS = Post-secondary

U = Unlimited

 BUSINESS PROFESSIONALS of AMERICA Giving Purpose to Potential EVENTS-AT_A_GLANCE	Maximum minutes for orientation, prep, and warm-up.	Maximum minutes for wrap-up	Actual minutes of testing and/or presentation	Judges Questions (Min.)	May event be repeated?	Are production standards used?	May reference materials be used? (See WSAP for details)	Computer and printer provided by BPA?	Color printing allowed?	Bring own computer?	Judges utilized*	Number of state entries eligible for national competition	Level for this event	Associate Division Event	Additional Certification Component	Release Forms Required?
Business Administration																
(200) Fundamental Word Processing (S PS)	10	10	60		N	Y	Y	Y				5	S, PS	Y		N
(205) Intermediate Word Processing (S PS)	10	10	60		N	Y	Y	Y				5	S, PS	Y		N
(210) Advanced Word Processing (S PS)	10	10	90		Y	Y	Y	Y				5	S, PS		Y	N
(215) Integrated Office Applications (S PS)	10	10	90		Y	Y	Y	Y				5	S, PS		Y	N
(220) Basic Office Systems & Procedures (S PS)	10	10	90		N	Y	Y	Y				5	S, PS			N
(225) Advanced Office Systems & Procedures (S PS)	10	10	90		Y	Y	Y	Y				5	S, PS			N
(230) Fundamental Spreadsheet Applications (S PS)	10	10	90		N	N	Y	Y				5	S, PS			N
(235) Advanced Spreadsheet Applications (S PS)	10	10	90		Y	N	Y	Y				5	S, PS		Y	N
(240) Database Applications (S PS)	10	10	90		Y	N	Y	Y				5	S, PS		Y	N
(245) Legal Office Procedures (S PS)	10	10	60		Y	Y	Y	Y				5	S, PS			N
(255) Administrative Support Team (S PS)	10	10	90		Y	Y	Y	Y				2	S, PS	Y		N
(260) Admin. Support Research Project (S)	3		7	5	Y	N	N	N			2	3	S	Y		N
(265) Business Law & Ethics (S PS)	10	10	60		Y	N	Y	Y				5	S, PS			N
(290) Admin. Support Concepts - Open Event (S PS)			60		Y	N	N	N				U	S, PS	Y		N
Management Information Systems																
(300) Computer Network Technology (S PS)			60		Y	N	Y	N				5	S, PS	Y	Y	N
(305) PC Servicing & Troubleshooting (S PS)	See guidelines for administration				Y	N	Y	N				5	S, PS		Y	N
(310) Server Administration Using Microsoft® (S PS)			60		Y	N	Y	N				5	S, PS		Y	N
(315) Network Administration Using Cisco® (S PS)			60		Y	N	Y	N				5	S, PS			N
(320) Computer Security (S PS)	See guidelines for administration				Y	N	Y	N				5	S, PS	Y	Y	N
(325) Network Design Team (S PS)	3		30/10	10	Y	Y	Y	N	Y	Y	2	2	S, PS			N
(330) C# Programming (S PS)	10	10	90		Y	N	Y	N		Y		5	S, PS		Y	N
(335) C++ Programming (S PS)	10	10	90		Y	N	Y	N		Y		5	S, PS			N
(340) Java Programming (S PS)	10	10	90		Y	N	Y	N		Y		5	S, PS			N
(345) SQL Database Fundamentals (S PS)	10	10	60		Y	N	Y	N				5	S, PS			N
(350) Linux Operating System Fundamentals (S PS)	10	10	60		Y	N	Y	N				5	S, PS		Y	N
(355) Python Programming (S PS)-Pilot	10	10	90		Y	N	Y	N		Y		5	S, PS			N
(390) Computer Programming Concepts - Open Event (S PS)			60		Y	N	N	N				U	S, PS	Y		N
(391) Information Tech Concepts - Open Event (S PS)			60		Y	N	N	N				U	S, PS	Y		N

*Rating sheets are provided in the guidelines.


Y = Yes

N = No

S = Secondary

PS = Post-secondary

U = Unlimited

 BUSINESS PROFESSIONALS of AMERICA Giving Purpose to Potential EVENTS-AT_A_GLANCE	Maximum minutes for orientation, prep, and warm-up	Maximum minutes for wrap-up	Actual minutes of testing and/or presentation	Judges Questions (Min.)	May event be repeated?	Are production standards used?	May reference materials be used? (See WSAP for details)	Computer and printer provided by BPA?	Color printing allowed?	Bring own computer?	Judges utilized*	Number of state entries eligible for national competition	Level for this event	Associate Division Event	Additional Certification Component	Release Forms Required?
Digital Communication & Design																
(400) Fundamental Desktop Publishing (S PS)	10	10	90		Y	Y	Y	Y	Y			5	S, PS	Y		N
(405) Fundamentals of Web Design (S PS)	10	10	90		Y	N	Y	Y				5	S, PS		Y	N
(410) Graphic Design Promotion (S PS)	3		6	5	Y	N	N	N	Y		2	3	S, PS	Y		Y
(415) Advanced Desktop Publishing (S PS)	10	10	90		Y	Y	Y	Y	Y			5	S, PS	Y		N
(420) Digital Media Production (S PS)	3		10	5	Y	N	N	N	Y	Y	2	3	S, PS	Y		Y
(425) Computer Modeling (S)	3		10	5	Y	N	N	N		Y	2	3	S			Y
(430) Video Production Team (S PS)	3		10	5	Y	N	N	N	Y	Y	2	2	S, PS	Y		Y
(435) Website Design Team (S PS)	3		10	5	Y	N	N	N	Y	Y	2	2	S, PS	Y		Y
(440) Computer Animation Team (S)	3		10	5	Y	N	N	N		Y	2	2	S			Y
(445) Broadcast News Production Team (S PS)	3		10	5	Y	N	N	N		Y	2	2	S, PS			Y
(450) Podcasting Team (S PS)-Pilot	3		10	5	Y	N	N	N		Y	2	2	S, PS			Y
(490) Digital Communication & Design Concepts – Open Event (S PS)			60		Y	N	N	N				U	S, PS	Y		N
Management, Marketing & Communication																
(500) Global Marketing Team (S)	3		10	5	Y	N	N	N	Y	Y	2	2	S			N
(505) Entrepreneurship (S PS)	3		5-7	5	Y	N	N	N	Y	Y	2	3	S, PS	Y		N
(510) Small Business Management Team (S PS)	8		30/10	10	Y	N	Y	N		Y	2	2	S, PS			N
(515) Interview Skills (S PS)			15	0	N	N	N	N			2	3	S, PS	Y		N
(520) Advanced Interview Skills (S PS)			15	0	Y	N	N	N			2	3	S, PS	Y		N
(525) Extemporaneous Speech (S)	10		2-4	0	Y	N	N	N			2	3	S	Y		N
(530) Contemporary Issues (PS)	10		3-5	0	Y	N	N	N			2	3	PS			N
(535) Human Resource Management (S PS)	20		3-5	3	Y	N	Y	N			2	3	S, PS			N
(540) Ethics & Professionalism (S PS)	20		5-7	3	Y	N	Y	N			2	3	S, PS			N
(545) Prepared Speech (S PS)	1		5-7	5	Y	N	Y	N			2	3	S, PS	Y		N
(550) Parliamentary Procedure Team (S)	15		15	5	Y	N	Y	N			3	2	S			N
(555) Presentation Management Individual (S PS)	3		7-10	5	Y	N	N	N		Y	2	3	S, PS			Y
(560) Presentation Management Team (S PS)	3		7-10	5	Y	N	N	N		Y	2	2	S, PS	Y		Y
(590) Business Meeting Management Concepts Open Event (S PS)			60		Y	N	N	N				U	S, PS	Y		N
(591) Management, Marketing & Human Resources Concepts – Open Event (S PS)			60		Y	N	N	N				U	S, PS	Y		N
(592) Parliamentary Procedure Concepts – Open Event (S PS)			60		Y	N	N	N				U	S, PS	Y		N
(593) Project Management Concepts – Open Event (PS)			60		Y	N	N	N				U	PS	Y		N
(594) Digital Marketing Concepts – Open Event (S PS)			60		Y	N	N	N				U	S, PS	Y		N

*Rating sheets are provided in the guidelines.


Y = Yes

N = No

S = Secondary

PS = Post-secondary

U = Unlimited

 BUSINESS PROFESSIONALS of AMERICA Giving Purpose to Potential EVENTS-AT_A_GLANCE	Maximum minutes for orientation, prep, and warm-up.	Maximum minutes for wrap-up	Actual minutes of testing and/or presentation	Judges's Questions (Min.)	May event be repeated?	Are production standards used?	May reference materials be used? (See WSAP for details)	Computer and printer provided by BPA?	Color printing allowed?	Bring own computer?	Judges utilized*	Number of state entries eligible for national competition	Level for this event	Associate Division Event	Additional Certification Component	Release Forms Required?
Health Administration																
(600) ICD-10-CM Medical Diagnostic Coding (Formerly ICD-10-CM Diagnostic Coding) (S PS)	10	10	60		Y	N	Y	Y				5	S, PS			N
(605) Health Insurance & Medical Billing (S PS) -Pilot	10	10	60		Y	N	Y	Y				5	S, PS			N
(610) Health Administration Procedures (Formerly Medical Office Procedures) (S PS)	10	10	60		Y	Y	Y	Y				5	S, PS	Y		N
(615) Health Leadership-Special Topics (S PS)-Pilot	3		10	5	Y	N	Y	N		Y		3	S, PS			N
(620) Medical Terminology Concepts-Open Event (S PS)-Pilot			60		Y	N	Y	Y				5	S, PS			N

*Rating sheets are provided in the guidelines.

Y = Yes

N = No

S = Secondary

PS = Post-secondary

U = Unlimited

Webinar Series Schedule

What is the BPA Webinar Series?

BPA offers a wide range of webinars throughout the membership year designed to educate, train and inform our members. We highly encourage you to participate in these webinars to learn more about our organization and enhance your overall BPA experience.

Updated Webinar Model for 2020-2021

In order to dedicate more time to answer specific questions that members have pertaining to webinar topics, our model has changed for releasing each webinar.

- All webinars outlined in the schedule will be made available on Monday's by **10:00 a.m. Eastern Time (6:00 a.m. Alaska Time)** at <https://bpa.org/events/webinar-series/>.
- A live Q & A session will be held via Zoom on Thursday's of the same week from **6:00 p.m. to 7:00 p.m. Eastern Time (2:00 p.m.-3:00 p.m. Alaska Time)**.
- Members will also have the ability to e-mail questions to the national staff member hosting each webinar that will be responded to personally and addressed during the live Q & A session.

The schedule outlined in this document only represents webinars hosted by the National Center. We also offer several exciting BPA partner and engaging National Officer Team webinars throughout the membership year. These webinars will be communicated through our National BPA social media platforms, as well as via email.

In order to attend the live Q & A session, simply click the "**Zoom Link**" located within each webinar description.

All webinars will also be archived to allow you to view at your convenience at:

<https://bpa.org/events/webinar-series/#expired-webinars>

Weekly Webinar Release Date	Webinar Topic
September 07, 2020	New Chapter Welcome
September 14, 2020	National BPA Welcome
September 21, 2020	Virtual Events / National Showcase
September 28, 2020	BPA Cares & Torch Awards
October 05, 2020	WSAP Competitive Events
October 12, 2020	Advocating for BPA
January 11, 2021	NLC Advisor Orientation
February 01, 2021	Running for National Office
February 22, 2021	NLC Volunteer & Internship Program
March 29, 2021	Exploring NLC 2021 (Orlando, FL)

Detailed Webinar Series Schedule

Webinar Topic: New Chapter Welcome

Host: Mark Burch, Director of Member Services

Release Date: September 07, 2020

E-mail questions to: mburch@bpa.org

Live Q & A: September 10, 2020

Zoom Meeting Link: <https://us02web.zoom.us/j/88416644664>

Description: This webinar is dedicated to new chapters for the 2020-21 membership year. Join our Director of Member Services, Mr. Mark Burch to learn about all of the programs and resources available to your members. You will also receive helpful information on how to manage your chapter and tips to maximize the BPA experience for you and your students.

Webinar Topic: National BPA Welcome

Host: Dr. LouAnn Ross, Executive Director & Mark Burch, Director of Member Services

Release Date: September 14, 2020

E-mail questions to: mburch@bpa.org

Live Q & A: September 17, 2020

Zoom Meeting Link: <https://us02web.zoom.us/j/89486800638>

Description: Welcome back BPA! Join our Executive Director, Dr. LouAnn Ross as she provides an organizational update, as well as information on exciting changes and primary initiatives for the 2020-21 membership year.

Webinar Topic: Virtual Competitive Events & National Showcase Overview

Host: Patrick Schultz, Director of Technology Integration

Release Date: September 21, 2020

E-mail questions to: pschultz@bpa.org

Live Q & A: September 24, 2020

Zoom Meeting Link: <https://us02web.zoom.us/j/86257266596>

Description: Did you know that National BPA offers Virtual Competitive Events that are open to all members? Join our Director of Technology Integration, Mr. Patrick Schultz as he highlights each of our Virtual Events, eligibility requirements, important deadlines, our National Showcase and much more.

Webinar Topic: BPA Cares & Torch Award Program Highlights

Host: Brigitte Bethea, Director of Leadership Development

Release Date: September 28, 2020

E-mail questions to: bbethea@bpa.org

Live Q & A: October 01, 2020

Zoom Meeting Link: <https://us02web.zoom.us/j/89767307253>

Description: This webinar is dedicated to highlighting our BPA Cares Program and Torch Awards Program. Join our Director of Leadership Development, Ms. Brigitte Bethea as she provides an overview of these leadership cultivation programs, eligibility requirements, important deadlines and more.

Webinar Topic: WSAP Competitive Events Overview / Updates

Host: Amber McNew, Director of Education

Release Date: October 05, 2020

E-mail questions to: amcnew@bpa.org

Live Q & A: October 08, 2020

Zoom Meeting Link: <https://us02web.zoom.us/j/81897003955>

Description: Are you ready to compete? Join our Director of Education, Ms. Amber McNew as she provides an overview of our WSAP Competitive Events Program. You will learn about all of the events offered by BPA, including new competitions for the 2020-21 membership year. Additionally, you will learn about the various resources available to help you prepare for events, eligibility requirements, important deadlines and much more.

Webinar Topic: Advocating for BPA

Host: Dr. LouAnn Ross, Executive Director

Release Date: October 12, 2020

E-mail questions to: mburch@bpa.org

Live Q & A: October 15, 2020

Zoom Meeting Link: <https://us02web.zoom.us/j/88666838757>

Description: Did you know that there's a difference between lobbying and advocacy? Join Dr. LouAnn Ross and members of the National Officer Team as they explain the difference, and go over ways you can effectively advocate for yourself, your education, and Business Professionals of America.

Webinar Topic: Running for National Office

Host: Brigitte Bethea, Director of Leadership Development & National Officer Team

Release Date: January 11, 2021

E-mail questions to: bbethea@bpa.org

Live Q & A: January 14, 2021 **Zoom Meeting Link:** <https://us02web.zoom.us/j/82884342805>

Description: Are you interested in running for National Office? Join our Director of Leadership Development, Ms. Brigitte Bethea as she outlines the procedures, eligibility requirements, important deadlines and more.

Webinar Topic: NLC Advisor Orientation

Host: Jonathan Smith, Director of Strategic Partnerships & Experiences

Release Date: February 01, 2021

E-mail questions to: jsmith@bpa.org

Live Q & A: February 04, 2021

Zoom Meeting Link: <https://us02web.zoom.us/j/82736222545>

Description: Are you planning to attend the 2021 National Leadership conference in Orlando, FL? Join our Director of Strategic Programs & Experiences, Mr. Jonathan Smith as he provides an overview of Disney's Coronado Springs property, eligibility requirements, important deadlines and helpful tips on how to get your students registered for NLC.

Webinar Topic: NLC Volunteer and Internship Program Overview

Host: Heather Bunning, Director of Marketing & Stakeholder Engagement

Release Date: February 22, 2021

E-mail questions to: hbunning@bpa.org

Live Q & A: February 25, 2021

Zoom Meeting Link: <https://us02web.zoom.us/j/88172692604>

Description: Are you interested in gaining real-world experience on-site at NLC? Join our Director of Marketing & Stakeholder Engagement, Mrs. Heather Bunning and BPA Alumni members as they provide an overview of our NLC Volunteer & Internship Program. You will learn about available positions, eligibility requirements, important deadlines and more.

Webinar Topic: Exploring the 2021 National Leadership Conference (Orlando, FL)

Host: National Officer Team

Release Date: March 29, 2021

E-mail questions to: bbethea@bpa.org

Live Q & A: April 01, 2021

Zoom Meeting Link: <https://us02web.zoom.us/j/89783783713>

Description: The National Officer Team, along with Director of Leadership Development, Ms. Brigitte Bethea, will highlight the programs and events available to members attending NLC 2021. Additionally, they will make you aware of exciting attractions you may want to take advantage of while attending visiting Orlando, FL.

National BPA Social Media Information

To access National BPA social media platforms and follow us, please click on the secure links below:

- [Facebook](#)
- [Twitter](#)
- [Instagram](#)
- [LinkedIn](#)
- [YouTube](#)

Additional Learning Opportunities

National BPA also has several valuable business and industry partners that will be offering additional educational and certification opportunities during the 2020-2021 membership year. Information on these webinars will be sent out in advance through our membership registration system and social media platforms.

National Center Website Resource Links

This website resource guide is designed to assist you in locating information and resources available on our national website. To visit a link, just click on one of the topics listed below. If you hover over each topic the full url will display for verification of secure link.

www.bpa.org

About Us

[Mission and Vision](#)

[Our History](#)

[Our Culture](#)

[Our Footprint](#)

BPA Governance

[Governing Documents](#)

[Strategic and Long Range Plan](#)

[Financial Transparency](#) (Annual Report & Annual Financial Publication)

People

[Board of Trustees](#) (BOT)

[State Association Advisory Council](#) (SAAC)

[Classroom Educators Advisory Council](#) (CEAC)

[National Business Advisory Council](#) (NBAC)

[National Officer Team](#)

[National Staff](#)

Media Center

[Branding Guidelines](#)

[News & Updates](#)

[Member List Policy](#) (Our Privacy Policy)

Student Links (Login Required to Access)

[Compete](#) (Workplace Skills Assessment Program Download Center)

[Pre-Submit System](#) (student login required)

[Torch Awards Program Overview](#)

[Torch Awards Portal](#)

[BPA Cares Program](#)

[Student Certifications](#)

- [BPA Learn](#) (LMS to access courses – members only)

[Partner Contests](#)

[Run for National Office](#)

[Student of the Year](#)

[President's Volunteer Service Award](#)

[Quality Chapter Distinction](#)

[All Scholarships](#)

Educators (Local Advisor)

[Divisions / Costs](#)

[Start a Chapter](#)

[Educator Resources](#) (Fall Mailing, Recruitment Posters)

[Membership Registration System \(MRS\)](#)

[Torch Awards Program Overview](#)

[Torch Awards Portal](#) (login required)

[BPA Cares Program](#)

[Advisor Certification Courses](#)

- [BPA Learn](#) (LMS to access course – members only)

[Awards](#) (for Advisors and Educators)

[Webinar Series](#)

Conferences

[Calendar](#) (National Events)

[Conference Information](#) (Fall, Regional and State Leadership Conferences)

[National Leadership Conference](#)

[Summer Meeting](#)

[Webinar Series](#)

Get Involved

[Join](#)

[Alumni](#)

[Sponsor](#)

[Partner](#)

[Volunteer](#)

[Exhibit](#) (at NLC)

[Donate](#)

[Advocate](#)